



NX Schematics – Direct Routing Interface

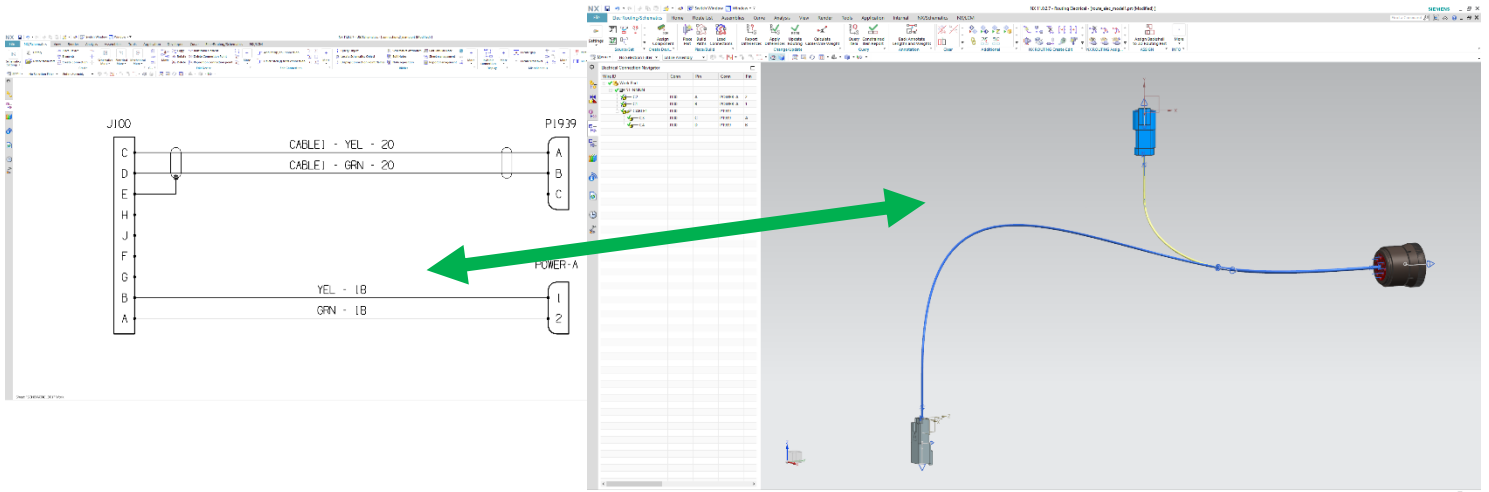
LTX Software Inc.
 Suite 221- 5403
 Crowchild Trail N.W.
 Calgary, AB, Canada
 T3B 4Z1
 Tel (403) 247-8994
 info@ltxsi.com
 www.ltxsi.com

No need to export / import data files!



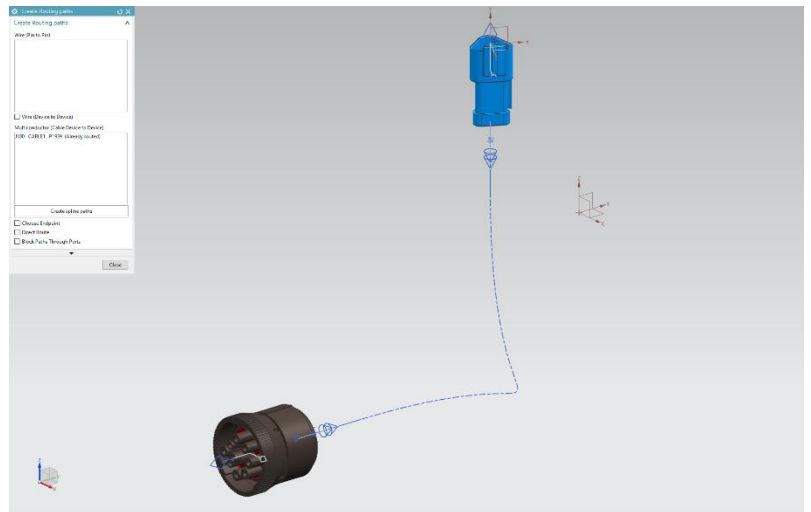
NX Schematics – Direct Routing Interface

The Direct Routing Interface links the 2D NX Schematics diagram with the 3D Routing Electrical assembly. It leverages the fact that both NX Schematics and Routing applications share the same NX space. This allows the user to directly exchange logical data between NX Schematics and Routing. No exporting or importing of files!



Features

- Place Devices directly from NX Schematics. Devices / Connectors are automatically created in the Component Navigator with the correct Reference Designator and Fabrication.
- Create Routing Paths directly from NX Schematics. The connectivity of NX Schematics is used to determine paths within Routing.
- Import Connections directly from NX Schematics. Connection and Component navigators are loaded automatically with correct device, wire / cable, and fabrication information.

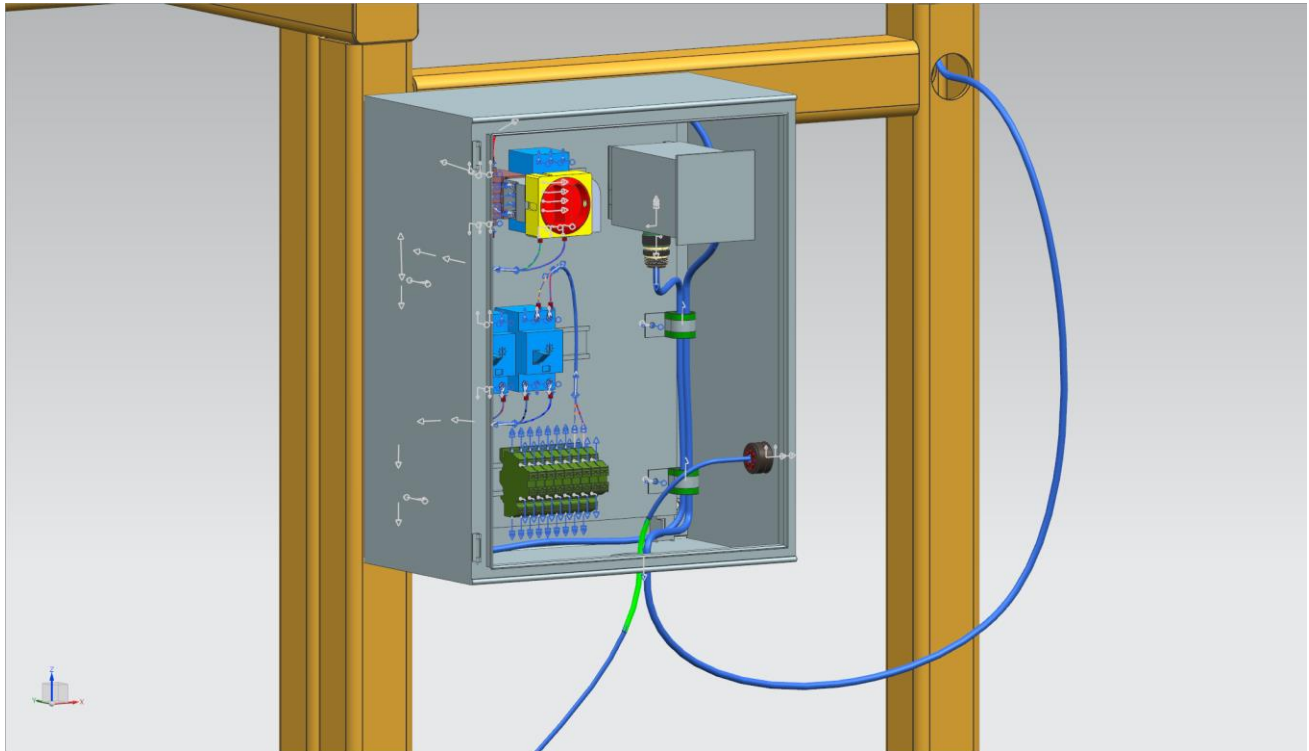


Electrical Connection Navigator

Wire ID	From Dev	Conn	Pin	To Dev	Conn	Pin	Length	Cut	Wired	Color	Gauge	Type	Harness	OD
Work Part														
51-NNNN														
C2	J100	A		POWER-A	2		972.896818	1075.186500	A	26	18.000000		51-NNNN	1.020000
C1	J100	B		POWER-A	1		972.896818	1075.186500	A	6	18.000000		51-NNNN	1.020000
CABLE1	J100			P1939			346.065132	376.065132	A	58	0.000000		51-NNNN	2.000000
C3	J100	C		P1939	A		346.065132	385.671645	A		20.000000		51-NNNN	1.849000
C4	J100	D		P1939	B		346.065132	385.671645	A		20.000000		51-NNNN	1.849000

Additional Features

- Check and update differences between the 2D Schematic and the 3D Routing assembly.
- Filter by harness for ease of exchanging the logical data.
- Add any device or connection attribute from NX Schematics for use in Routing.
- Create specific characteristics to be used in the Routing Navigators or Formboard Drawing.
- Use relevant Routing data directly from NX Schematics (OD, Min Bend Radius, Color, etc.)
- Transfer additional logical data from NX Schematics (Terminals, Cavity Plugs, Wire Seals, Backshells, Signals, etc.)
- Back annotate Lengths, Cut Lengths, and Weight to NX Schematics.



Customers and Applications

NX Schematics Routing Interface functionality within NX makes it an excellent application in aerospace, automotive, and equipment manufacturing industries for:

- Users who Create Electrical Diagrams with NX Schematics
- Users who need to share and exchange logical data with Routing
- Companies who desire to consolidate their design applications into NX

Devices	Associated 3D Connectors and 3D Devices for 2D Schematics Devices
Connections	Build Routing Paths directly from Schematic Connections and Multi-Conductors; Populate the Routing Electrical Component and Connection Navigator from the schematic
Attributes	Transfer Attributes to Routing Electrical including Multi-Conductor diameter
Libraries	Associate the 3D Component with the 2D Schematics Device
Software	The Direct Routing Interface is Included with NX Schematics; Additionally Requires Routing Electrical
Platforms	Windows
NX Versions	NX10 and later
Warranty/Support	Standard NX warranty and maintenance; Provided by Siemens PLM Software
Pricing	Contact your Siemens PLM Software Sales Representative
Ordering	Siemens Sales Catalog Number: SI2800