



NX Schematics V12

Enabling Physical Design from Logical Design

LTX Software Inc.
Suite A- 1700 Varsity
Estates Drive N.W.
Calgary, AB, Canada
T3A 1S3
Tel (403) 247-8994
Fax (403) 247 9451
www.ltxsi.com

NX Schematics

NX Schematics is an integrated 2D schematic capture application within NX. Through sharing connection lists, NX Schematics works as a concurrent design tool with Routing Electrical. As a tool to create the logical design of various systems, NX Schematics provides a unified approach to multiple disciplines such as electrical (wire harness), electrical (equipment design), piping, tubing, and pneumatics. Functionally, NX Schematics places devices, connects these devices and tracks these connections.

Benefits

- Generate schematics automatically from connection lists.
- Capture entire system with multiple schematic part files. Logical Assemblies.
- Time and expense of re-creating the logical design can be eliminated, reducing errors, improving efficiencies in the design process and time to market.
- Utilize design rules to automate wire terminations, wire size, etc.

Customers and Applications

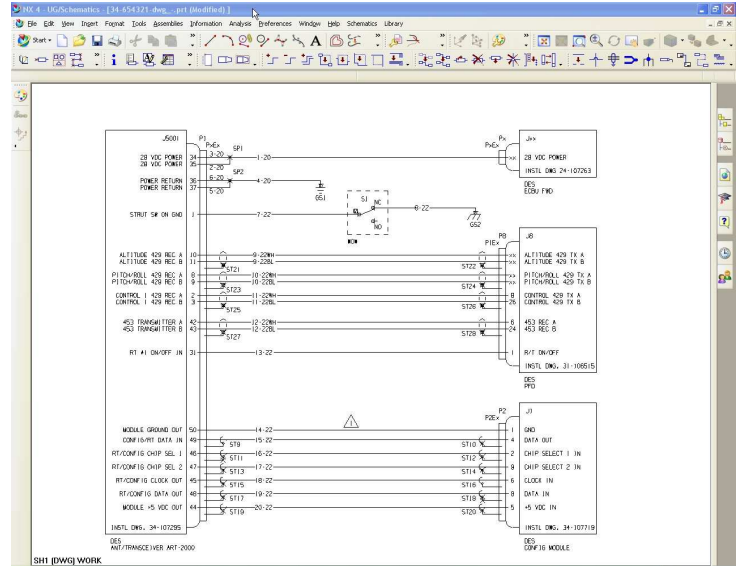
NX Schematics functionality and inter-operability with NX makes it an excellent application in aerospace, automotive, and equipment manufacturing industries for:

- Existing and potential Routing Electrical Customers users who require a concurrent logical design module to the physical design modules
- Users creating schematics manually in Unigraphics or other CAD systems
- Users desiring to consolidate all CAD systems to one system, Unigraphics.

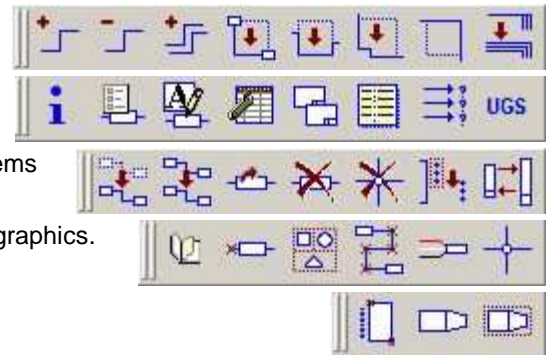
Existing NX Customers

Existing NX Customers will be up to speed in no time with:

- Toolbars
- Styler Dialogs
- Attributes
- Standard UG Commands

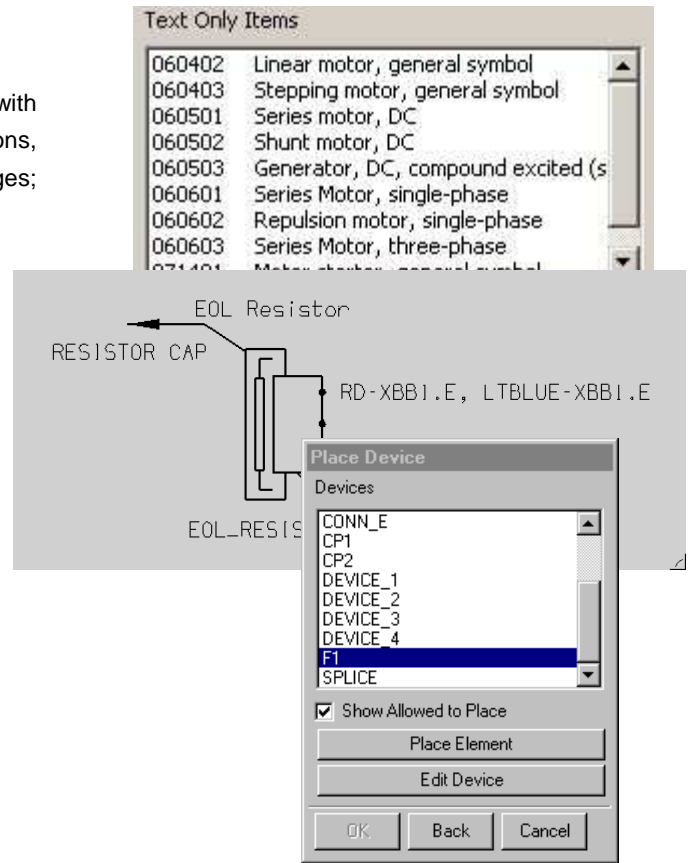


- Easy-to-use library editing tools allow easy creation of custom libraries for distinct Customer applications, allowing for easy creation of customer devices and connection types for use in electrical, pneumatic, and tubing applications.
- Reporting functions feature bill of material and connection lists in various formats describing the logical connection between devices, allowing the logical data to be re-used.



Features and Functions

- Runs as a NX application, exchanging logical data directly with Routing Electrical; compatible with NX Routing applications, providing a logical design companion to NX Routing packages; Designed to work under native file mode or Team Center.
- Define and maintain connectivity between devices, with standard and custom attributes, and output connection lists for design or manufacturing.
- Reporting tools compile list of materials data and connection lists; Connection lists describe the logical connections between devices; Easy manipulation and formatting of output data for Customer specific requirements.
- Create Devices and Connection Types as custom library items.
- Design rules allow automatically generated schematics from connection lists or XML data.
- Enhanced features with multiple drawing sheets, offpage and offpart connections between devices, auto – break and auto – join.



BILL OF MATERIALS		
There are 9 different items		
4	SPLICE	CAS100, CAS103, CAS104, CAS200
1 08917373	BATT POS	CA08917373
1 08917374	BATT NEG	CA08917374
1 10098544	DOOR SWITCH 10098544	CL10098544
1 10098547	DOOR SWITCH 10098547	CR10098547
1 12059929	STARTER	CA12059929
1 12064769	10F M/P 150	CA12064769
1 12129068	GENERATOR ASM	CA12129068
2 15300027	ACTUATOR ASM-FRT S/D LOCK L	CA15300027, CR15300027

Devices	NX Parts, Regular NX Geometry, Connection Points
Connection	Show relationships between devices; Represent wires, cable, tubing; Consist of NX lines; Attach to Connection Points on devices; Connectivity maintained with NX part file
Attributes	Standard; User Defined; Required; Limits; Displayable; with Linked Notes
Reporting	Connection List; Bill of Materials; NX Routing formats; Custom formats; Filters; Wire Terminations; Connection Diagram
Libraries	Descriptor Files - Define properties; ASCII Text; Create / Modify with Standard Editor; Library Interface; Apply to Existing Schematics; Simple to Create; NX Parts- Standard NX Parts; Team Center or Native; Multiple Descriptors; Define Connection Points; Create Standalone; Create from geometry on schematic
Software	Runs as NX Application; Requires: Gateway, Drafting
Platforms	Windows, HPUX, Solaris
Unigraphics Compatibility	v18 – vNX4
Warranty/Support	Standard Unigraphics warranty, plus maintenance options
Pricing	Contact your NX Sales Representative
Ordering	NX Catalog Number: SI2800